

RPS12 Antibody (N-term)
Affinity Purified Rabbit Polyclonal Antibody (Pab)
Catalog # AP12967a**Specification**

RPS12 Antibody (N-term) - Product Information

Application	WB,E
Primary Accession	P25398
Other Accession	P47840 , P63324 , P46405 , P63323 , P84175 , Q76I81 , NP_001007.2 , G1SFR8
Reactivity	Human, Mouse
Predicted	Bovine, Chicken, Pig, Rabbit, Rat, Xenopus
Host	Rabbit
Clonality	Polyclonal
Isotype	Rabbit IgG
Calculated MW	14515
Antigen Region	15-44

RPS12 Antibody (N-term) - Additional Information**Gene ID** 6206**Other Names**

40S ribosomal protein S12, RPS12

Target/Specificity

This RPS12 antibody is generated from rabbits immunized with a KLH conjugated synthetic peptide between 15-44 amino acids from the N-terminal region of human RPS12.

Dilution

WB~~1:1000

E~~Use at an assay dependent concentration.

Format

Purified polyclonal antibody supplied in PBS with 0.09% (W/V) sodium azide. This antibody is purified through a protein A column, followed by peptide affinity purification.

Storage

Maintain refrigerated at 2-8°C for up to 2 weeks. For long term storage store at -20°C in small aliquots to prevent freeze-thaw cycles.

Precautions

RPS12 Antibody (N-term) is for research use only and not for use in diagnostic or therapeutic procedures.

RPS12 Antibody (N-term) - Protein Information**Name** RPS12 ([HGNC:10385](#))

Function Part of the small subunit (SSU) processome, first precursor of the small eukaryotic ribosomal subunit. During the assembly of the SSU processome in the nucleolus, many ribosome biogenesis factors, an RNA chaperone and ribosomal proteins associate with the nascent pre- rRNA and work in concert to generate RNA folding, modifications, rearrangements and cleavage as well as targeted degradation of pre- ribosomal RNA by the RNA exosome (PubMed:[34516797](#)). Subunit of the 40S ribosomal complex (By similarity).

Cellular Location

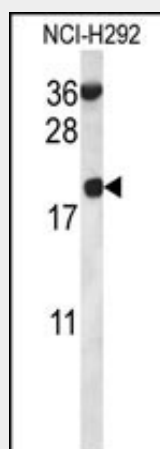
Cytoplasm. Nucleus, nucleolus

RPS12 Antibody (N-term) - Protocols

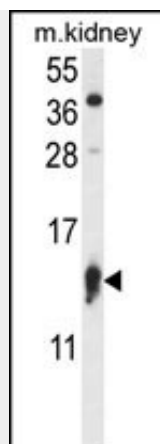
Provided below are standard protocols that you may find useful for product applications.

- [Western Blot](#)
- [Blocking Peptides](#)
- [Dot Blot](#)
- [Immunohistochemistry](#)
- [Immunofluorescence](#)
- [Immunoprecipitation](#)
- [Flow Cytometry](#)
- [Cell Culture](#)

RPS12 Antibody (N-term) - Images



RPS12 Antibody (N-term) (Cat. #AP12967a) western blot analysis in NCI-H292 cell line lysates (35ug/lane). This demonstrates the RPS12 antibody detected the RPS12 protein (arrow).



RPS12 Antibody (N-term) (Cat. #AP12967a) western blot analysis in mouse kidney tissue lysates (35ug/lane). This demonstrates the RPS12 antibody detected the RPS12 protein (arrow).

RPS12 Antibody (N-term) - Background

Ribosomes, the organelles that catalyze protein synthesis, consist of a small 40S subunit and a large 60S subunit. Together these subunits are composed of 4 RNA species and approximately 80 structurally distinct proteins. This gene encodes a ribosomal protein that is a component of the 40S subunit. The protein belongs to the S12E family of ribosomal proteins. It is located in the cytoplasm. Increased expression of this gene in colorectal cancers compared to matched normal colonic mucosa has been observed. As is typical for genes encoding ribosomal proteins, there are multiple processed pseudogenes of this gene dispersed through the genome.

RPS12 Antibody (N-term) - References

Yu, Y., et al. Protein Sci. 14(6):1438-1446(2005)
Andersen, J.S., et al. Nature 433(7021):77-83(2005)
Kapp, L.D., et al. Annu. Rev. Biochem. 73, 657-704 (2004) :
Sampath, P., et al. Mol. Cell. Biol. 23(5):1509-1519(2003)
Yoshihama, M., et al. Genome Res. 12(3):379-390(2002)